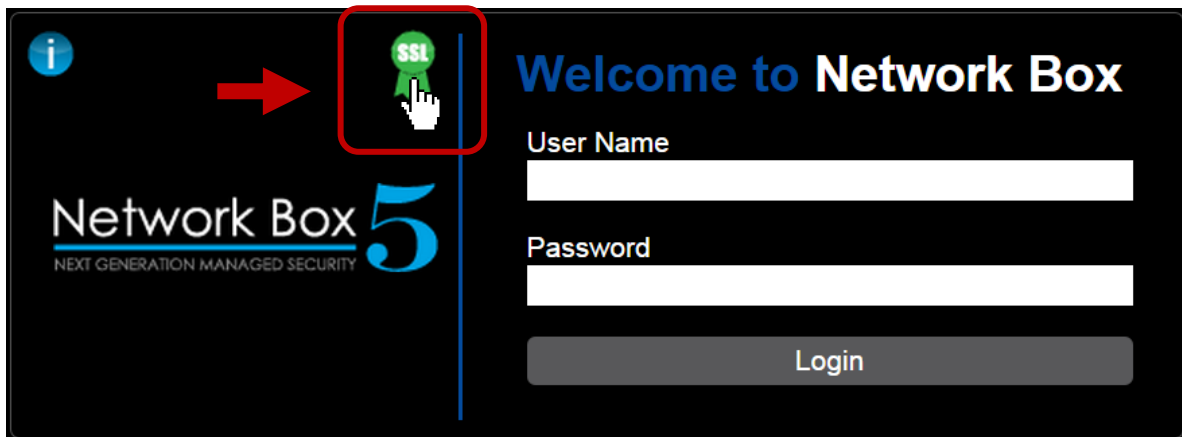


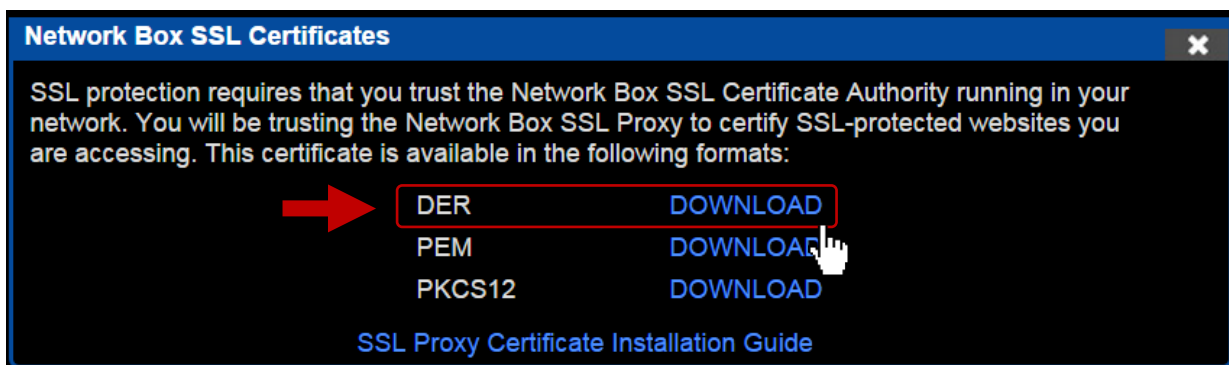
# SSL Proxy Certificate Installation Guide (Chrome)

In Chrome, type <http://my.network-box.com:4242> or <https://my.network-box.com:4243>

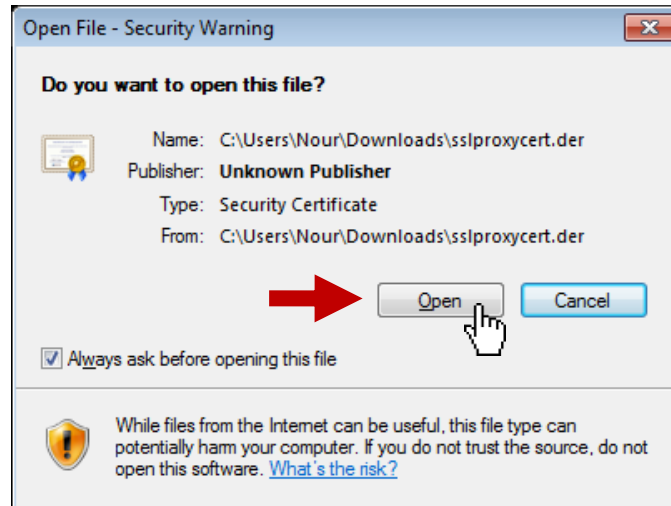
Click on the green SSL ribbon:



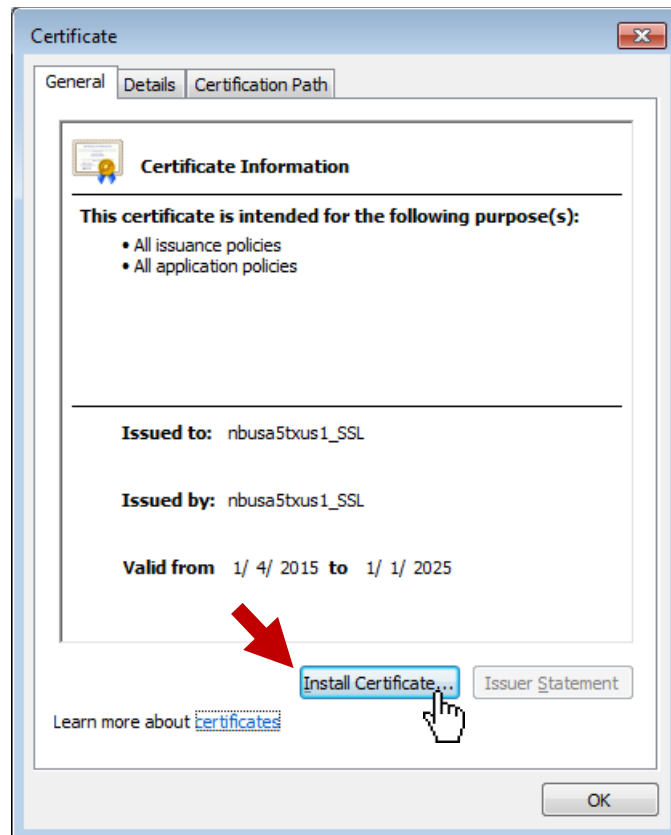
Download the DER certificate:



Open the file you downloaded. Click "Open"



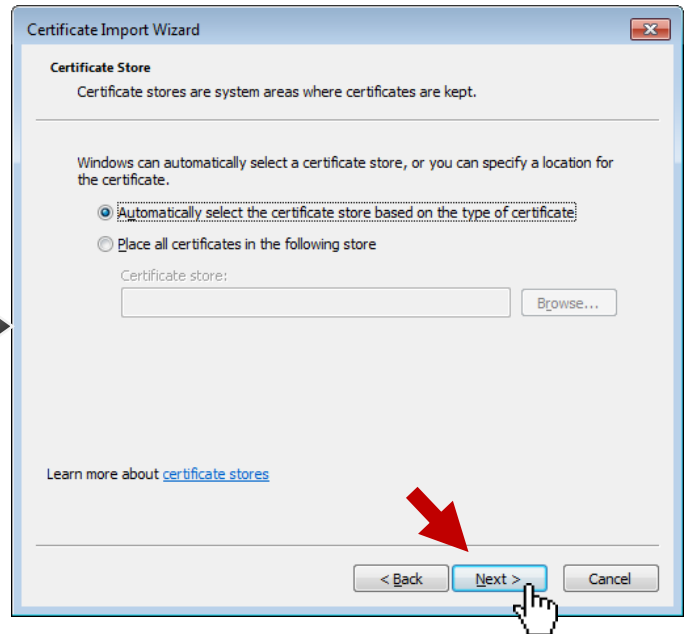
Click "Install Certificate..."



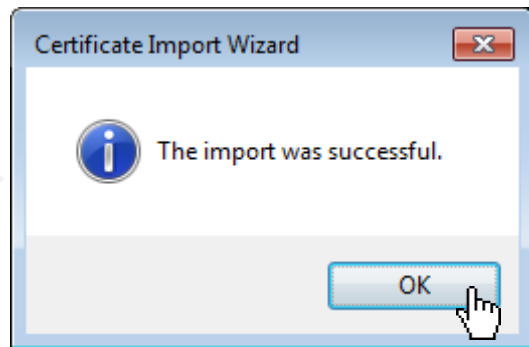
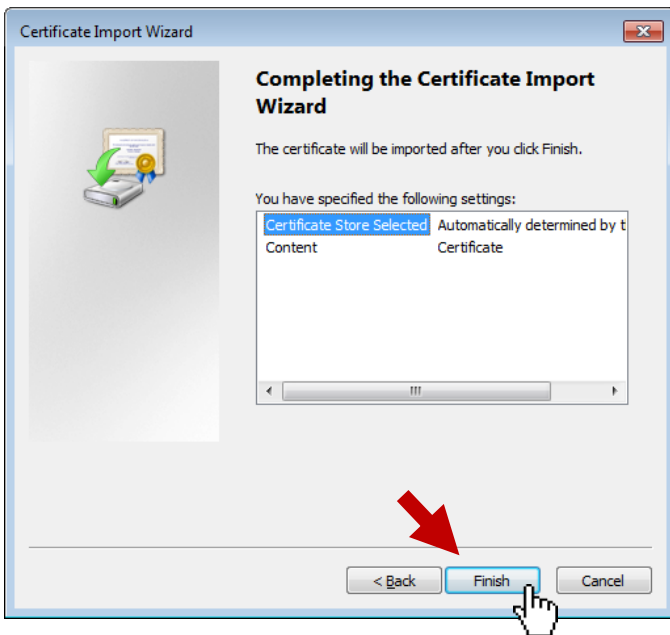
Click "Next >"



Click "Next >"



Click "Finish."



You have successfully installed the Network Box SSL Proxy Certificate for Chrome.